



LINK BOX TECHNICAL DATA SHEET

Drw. No. **04.12.03**
Article No. **06003001/0**

Issued Date: 4.08.2021
Rev. Date: -
Rev. 00

| Type | LB. U . E . 4 . 1 |
|---|---|
| - Description | Four Phase Earthing Link Box for Single Cable |
| - Designation | Underground |
| - Bonding | Earthing |
| - Sheath Voltage Limiter | N/A |
| - Phase No. | 4 |
| - Earth | 1 |
| Drawing Number | 04.12.03 |
| - Article No | 06003001/0 |
| Electrical Characteristics | |
| - Rated Frequency | 50/60 Hz |
| - SVL Type (*) | N/A |
| Protection Class | IP 68 |
| Material | |
| - Enclosure | Stainless Steel AISI304 (AISI316 optional) |
| - Body Thickness (**) | 2 mm |
| - Cover Thickness | 3 mm |
| - Connection Links | 10 µm Tinned Electrolytic Copper |
| - Connection Links Dimension | 40x10 mm (400 mm2) |
| - Gasket | Silicone |
| - Cable Glands | 4x48 mm & 1x48 mm |
| - Cable Glands Insulation | Silicone gasket & EPR tape & Mastic Tape & Heat Shrinkable Tube |
| - Insulation | Epoxy Support Insulator |
| - Conductor Fixing | Conductor Flexconn - 95-400 mm2 |
| - Painting Process | Electro Static Polyester Powder Paint |
| - Painting Code | RAL 7032 |
| - Labeling Material | Stainless Steel |
| - Protection Cover | PET-G |
| AC Impulse Test | |
| - Phase-to-Phase | N/A kV |
| - Phase-to-Earth | 40 kV |
| Voltage Withstand Test | |
| - AC | 20 kV/1 min |
| - DC | 25 kV/5 min |
| Short Circuit Test | |
| - Symmetrical | 50 kA/1sec |
| Internal Power Arcing Test (Symmetrical) | 40 kA/0.1 sec |

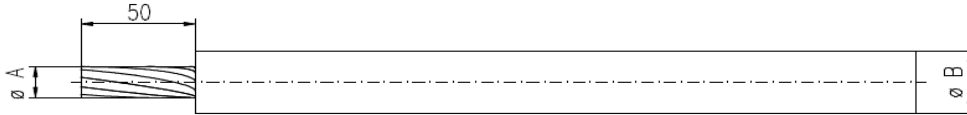
* In case of mismatch in given values, technical drawing provided along with the Order Confirmation is valid. Ask for conformity if SVL is out of EMELEC's scope.

** Body Thickness might differ related to technical drawing revision. For exact value, refer to technical drawing provided along with the Order Confirmation

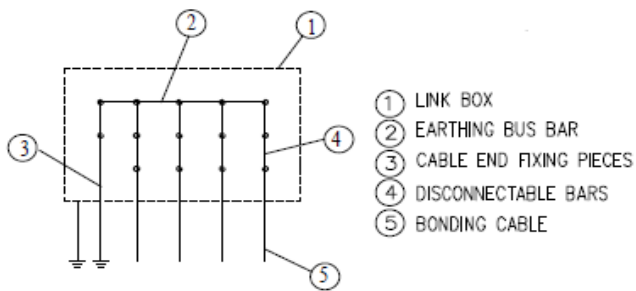
Bonding Cable

- Type Single

| Cross-Section (mm ²) | Gland Dia | | A | | B | | C | | D | |
|-------------------------------------|---------------|---------------|-------------|-------------|-------------|-------------|-------------|-------------|-------------|-------------|
| | Outer (mm) | Inner (mm) | min (mm) | max (mm) | min (mm) | max (mm) | min (mm) | max (mm) | min (mm) | max (mm) |
| 95-400 | 48 | 44 | 12 | 24 | 17 | 40 | N/A | N/A | N/A | N/A |



Schematic Diagram



Enclosure Dimensions (*)

| | |
|--------|--------|
| Width | 800 mm |
| Length | 670 mm |
| Height | 334 mm |
| Weight | 68 kg |

Filling Compound (Optional)

| | |
|--------|------------|
| Volume | 73 lt (**) |
|--------|------------|

* Scheme and dimensions are not to be mentioned as final drawing. For exact dimensions, refer to technical drawing provided along with the Order Confirmation

** Given are approximate values. Actual values might slightly differ.