



LINK BOX TECHNICAL DATA SHEET

Drw. No. **08.01.08**
Article No. **09708001/0**

Issued Date: 4.08.2021
Rev. Date: -
Rev. 00

Type	LB. U . SB .3SA . 6 . 1	
- Description	Single Point Bonding Link Box for Single Cable	
- Designation	Underground	
- Bonding	Single Point	
- Sheath Voltage Limiter	qty	3
- Phase No.	6	
- Earth	1	
Drawing Number	08.01.08	
- Article No	09708001/0	
Electrical Characteristics		
- Rated Frequency	50/60	Hz
- SVL Type (*)	Up to 18 kV / Optional	
Protection Class	IP 68	
Material		
- Enclosure	Stainless Steel AISI304 (AISI316 optional)	
- Body Thickness (**)	2 mm	
- Cover Thickness	3 mm	
- Connection Links	10 µm Tinned Electrolytic Copper	
- Connection Links Dimension	40x10 mm (400 mm2)	
- Gasket	Silicone	
- Cable Glands	6x48 mm & 1x48	
- Cable Glands Insulation	Silicone gasket & EPR tape & Mastic Tape & Heat Shrinkable Tube	
- Insulation	Epoxy Support Insulator	
- Conductor Fixing	Conductor Flexconn - 95-400 mm2	
- Painting Process	Electro Static Polyester Powder Paint	
- Painting Code	RAL 7032	
- Labeling Material	Stainless Steel	
- Protection Cover	PET-G	
AC Impulse Test		
- Phase-to-Phase	75	kV
- Phase-to-Earth	40	kV
Voltage Withstand Test		
- AC	20	kV/1 min
- DC	25	kV/5 min
Short Circuit Test		
- Symmetrical	50	kA/1sec
Internal Power Arcing Test (Symmetrical)		
	40	kA/0.1 sec

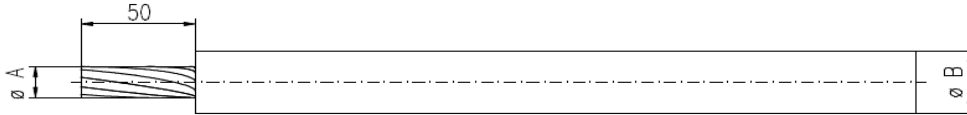
* In case of mismatch in given values, technical drawing provided along with the Order Confirmation is valid. Ask for conformity if SVL is out of EMELEC's scope.

** Body Thickness might differ related to technical drawing revision. For exact value, refer to technical drawing provided along with the Order Confirmation

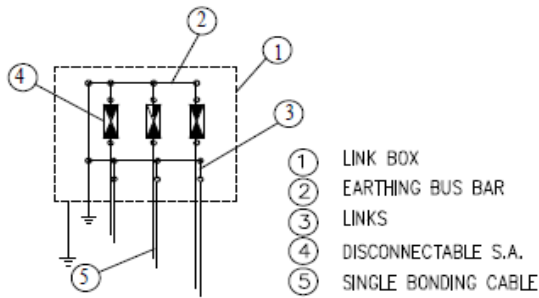
Bonding Cable

- Type Single

Cross-Section (mm ²)	Gland Dia		A		B		C		D	
	Outer (mm)	Inner (mm)	min (mm)	max (mm)	min (mm)	max (mm)	min (mm)	max (mm)	min (mm)	max (mm)
95-400	48	44	12	24	17	40	N/A	N/A	N/A	N/A



Schematic Diagram



Enclosure Dimensions (*)

Width	690 mm
Length	670 mm
Height	389 mm
Weight	80 kg

Filling Compound (Optional)

Volume	N/A
--------	-----

* Scheme and dimensions are not to be mentioned as final drawing. For exact dimensions, refer to technical drawing provided along with the Order Confirmation

** Given are approximate values. Actual values might slightly differ.