



## LINK BOX TECHNICAL DATA SHEET

Drw. No. **18.09.11**  
Article No. **22511001/0**

Issued Date: 12.10.2021  
Rev. Date: -  
Rev. 00

Type	LB. U . E . 3 . 1	
- Description	Direct Earthing Link Box with Transparent Window for Single Cable	
- Designation	Underground	
- Bonding	Earthing	
- Sheath Voltage Limiter	N/A	
- Phase No.	3	
- Earth	1	
<b>Drawing Number</b>	18.09.11	
- Article No	22511001/0	
<b>Electrical Characteristics</b>		
- Rated Frequency	50/60	Hz
- SVL Type (*)	N/A	
<b>Protection Class</b>	IP 68	
<b>Material</b>		
- Enclosure	Stainless Steel AISI304 (AISI316 optional)	
- Body Thickness (**)	2 mm	
- Cover Thickness	3 mm	
- Connection Links	10 µm Tinned Electrolytic Copper	
- Connection Links Dimension	40x10 mm (400 mm <sup>2</sup> )	
- Gasket	Silicone	
- Cable Glands	4x48 mm	
- Cable Glands Insulation	Silicone gasket & EPR tape & Mastic Tape & Heat Shrinkable Tube	
- Insulation	Epoxy Support Insulator	
- Conductor Fixing	Conductor Flexconn - 95-400 mm <sup>2</sup>	
- Painting Process	Electro Static Polyester Powder Paint	
- Painting Code	RAL 7032	
- Labeling Material	Stainless Steel	
- Protection Cover	PET-G	
<b>AC Impulse Test</b>		
- Phase-to-Phase	N/A	kV
- Phase-to-Earth	40	kV
<b>Voltage Withstand Test</b>		
- AC	20	kV/1 min
- DC	25	kV/5 min
<b>Short Circuit Test</b>		
- Symmetrical	50	kA/1sec
<b>Internal Power Arcing Test (Symmetrical)</b>		
	N/A	

\* In case of mismatch in given values, technical drawing provided along with the Order Confirmation is valid. Ask for conformity if SVL is out of EMELEC's scope.

\*\* Body Thickness might differ related to technical drawing revision. For exact value, refer to technical drawing provided along with the Order Confirmation

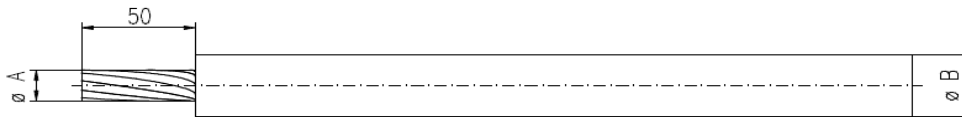


## LINK BOX TECHNICAL DATA SHEET

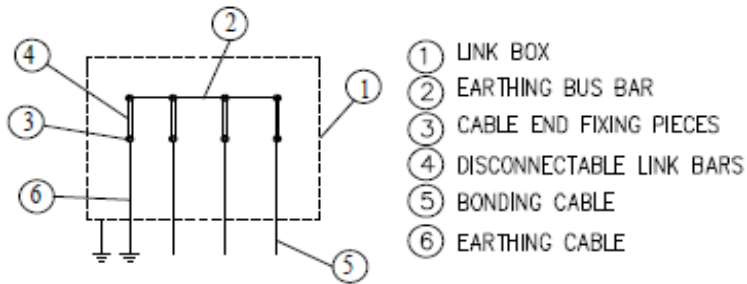
### Bonding Cable

- Type Single

Cross-Section (mm <sup>2</sup> )	Gland Dia		A		B		C		D	
	Outer (mm)	Inner (mm)	min (mm)	max (mm)	min (mm)	max (mm)	min (mm)	max (mm)	min (mm)	max (mm)
95-400	48	44	12	24	17	40	N/A	N/A	N/A	N/A



### Schematic Diagram



### Enclosure Dimensions (\*)

Width	690 mm
Length	670 mm
Height	334 mm
Weight	70 kg

### Filling Compound (Optional)

Volume	55 lt (**)
--------	------------

\* Scheme and dimensions are not to be mentioned as final drawing. For exact dimensions, refer to technical drawing provided along with the Order Confirmation

\*\* Given are approximate values. Actual values might slightly differ.