



## LINK BOX TECHNICAL DATA SHEET

Drw. No. **10.04.06**  
Article No. **12406001/0**

Issued Date: 10.05.2019  
Rev. Date: 4.08.2021  
Rev. 03

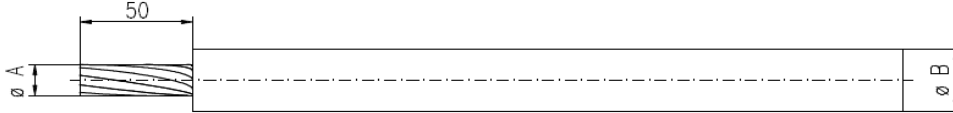
Type	LB. W . E .3SA . 3 . 1
- Description	Three Phase Earthing Link Box for Single Cable
- Designation	Wall Type
- Bonding	Earthing
- Sheath Voltage Limiter	qty 3
- Phase No.	3
- Earth	1
<b>Drawing Number</b>	10.04.06
- Article No	12406001/0
<b>Electrical Characteristics</b>	
- Rated Frequency	50/60 Hz
- SVL Type (*)	Up to 10 kV / Optional
<b>Protection Class</b>	IP 68
<b>Material</b>	
- Enclosure	Stainless Steel AISI304 (AISI316 optional)
- Body Thickness (**)	3 mm
- Cover Thickness	3 mm
- Connection Links	10 µm Tinned Electrolytic Copper
- Connection Links Dimension	40x10 mm (400 mm <sup>2</sup> )
- Gasket	Silicone
- Cable Glands	4x48 mm
- Cable Glands Insulation	Silicone gasket & EPR tape & Mastic Tape & Heat Shrinkable Tube
- Insulation	Epoxy Support Insulator
- Conductor Fixing	Conductor Flexconn - 95-400 mm <sup>2</sup>
- Painting Process	Electro Static Polyester Powder Paint
- Painting Code	RAL 7032
- Labeling Material	Stainless Steel
- Protection Cover	PET-G
<b>AC Impulse Test</b>	
- Phase-to-Phase	75 kV
- Phase-to-Earth	40 kV
<b>Voltage Withstand Test</b>	
- AC	20 kV/1 min
- DC	25 kV/5 min
<b>Short Circuit Test</b>	
- Symmetrical	N/A
<b>Internal Power Arcing Test (Symmetrical)</b>	40 kA/0.1 sec

\* In case of mismatch in given values, technical drawing provided along with the Order Confirmation is valid. Ask for conformity if SVL is out of EMELEC's scope.

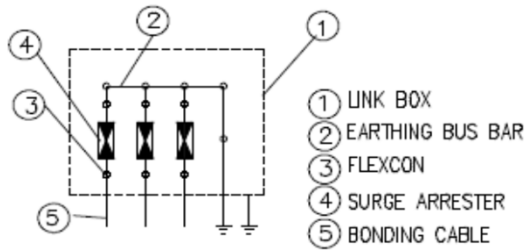
\*\* Body Thickness might differ related to technical drawing revision. For exact value, refer to technical drawing provided along with the Order Confirmation

**Bonding Cable**

- Type		Gland Dia		A		B		C		D		Single
Cross-Section (mm <sup>2</sup> )	Outer (mm)	Inner (mm)	min (mm)	max (mm)	min (mm)	max (mm)	min (mm)	max (mm)	min (mm)	max (mm)		
95-400	48	44	12	24	17	40	N/A	N/A	N/A	N/A		



**Schematic Diagram**



**Enclosure Dimensions (\*)**

Width	630 mm
Length	500 mm
Height	250 mm
Weight	50 kg

**Filling Compound (Optional)**

Volume	N/A
--------	-----

\* Scheme and dimensions are not to be mentioned as final drawing. For exact dimensions, refer to technical drawing provided along with the Order Confirmation

\*\* Given are approximate values. Actual values might slightly differ.