



LINK BOX TECHNICAL DATA SHEET

Drw. No. 10.04.07
Article No. 12407001/0

Issued Date: 4.08.2021
Rev. Date: -
Rev. 00

Type	LB. W . E .4SA . 4 . 1	
- Description	Four Phase Earthing Link Box for Single Cable	
- Designation	Wall Type	
- Bonding	Earthing	
- Sheath Voltage Limiter	qty	4
- Phase No.	4	
Earth	1	
Drawing Number	10.04.07	
- Article No	12407001/0	
Electrical Characteristics		
- Rated Frequency	50/60	Hz
- SVL Type (*)	Up to 10 kV / Optional	
Protection Class		
	IP	68
Material		
- Enclosure	Stainless Steel AISI304 (AISI316 optional)	
- Body Thickness (**)	3 mm	
- Cover Thickness	3 mm	
- Connection Links	10 µm Tinned Electrolytic Copper	
- Connection Links Dimension	40x10 mm (400 mm ²)	
- Gasket	Silicone	
- Cable Glands	5x48 mm	
- Cable Glands Insulation	Silicone gasket & EPR tape & Mastic Tape & Heat Shrinkable Tube	
- Insulation	Epoxy Support Insulator	
- Conductor Fixing	Conductor Flexconn - 95-400 mm ²	
- Painting Process	Electro Static Polyester Powder Paint	
- Painting Code	RAL 7032	
- Labeling Material	Stainless Steel	
- Protection Cover	PET-G	
AC Impulse Test		
- Phase-to-Phase	60	kV
- Phase-to-Earth	40	kV
Voltage Withstand Test		
- AC	20	kV/1 min
- DC	25	kV/5 min
Short Circuit Test		
- Symmetrical	50	kA/1sec
Internal Power Arcing Test (Symmetrical)		
	40	kA/0.1 sec

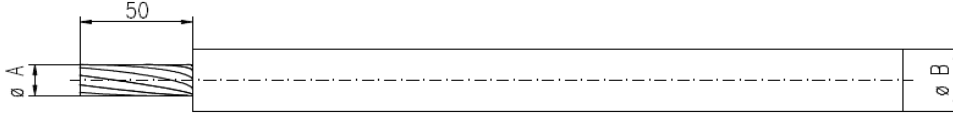
* In case of mismatch in given values, technical drawing provided along with the Order Confirmation is valid. Ask for conformity if SVL is out of EMELEC's scope.

** Body Thickness might differ related to technical drawing revision. For exact value, refer to technical drawing provided along with the Order Confirmation

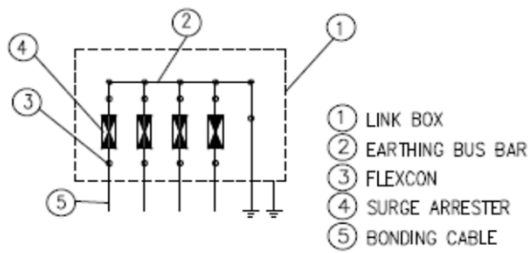
Bonding Cable

- Type Single

Cross-Section (mm ²)	Gland Dia		A		B		C		D	
	Outer (mm)	Inner (mm)	min (mm)	max (mm)	min (mm)	max (mm)	min (mm)	max (mm)	min (mm)	max (mm)
95-400	48	44	12	24	17	40	N/A	N/A	N/A	N/A



Schematic Diagram



Enclosure Dimensions (*)

Width	780 mm
Length	500 mm
Height	250 mm
Weight	66 kg

Filling Compound (Optional)

Volume	N/A
--------	-----

* Scheme and dimensions are not to be mentioned as final drawing. For exact dimensions, refer to technical drawing provided along with the Order Confirmation

** Given are approximate values. Actual values might slightly differ.